



HBS-4AT Can handle PCBs up to 150\*150mm

# HOT BAR SOLDERING MACHINE HBS-A4T

## Description:

---

HBS-A4T Hot Bar Soldering Machine use thermode technology that based on repid reflow by pluse heating to effectively solder flexible board on the PCB .Real time display on the touch screen.Can option CCD+displayer can accurate positioning and soldering quality check. The Z axis is controlled by a stepper motor and can be preset to soldeing pressure.

- LCD Control panel
- Digital temperature controller
- CCD+Display for accurate positioning (Option)
- Self-developed software ,fool-style programming
- Molybdenum alloy soldering tip,fast heating speed and long life time
- The Z axis is step motor can be preset to soldeing pressure

## Features:

---

- 1.The heating rate is customized to meet different products.
- 2.Molybdenum alloy head to ensure temperature stability, fast heating speed and long service life.
- 3.The level of soldering head is adjustable , to ensure uniform part assembly processing.
4. Digital display to control temperature,easy and clear.
5. In the software with digital pressure meter, can be preset pressure range.The Z axis use precise step motor.Position adjustment is very convenient.
- 6.The soldering head is made of molybdenum alloy, with fast heating and long life time.
- 7.It is equipped with precise PID control, phase Angle instead of pulse drive.
8. Little vibration, low noise, no voltage fluctuation.
- 9.Molybdenum alloy soldering head instead of traditional titanium alloy, heating faster, good coefficient of heat transfer, wear-resisting

10.The height is controlled by the motor, the z-axis adjustment precision is high, the pressure of soldering tip is even.

11.Optional CCD with camera can assist the alignment pad of the product and observe the effect of soldering.

## Specification:

Model	HBS-4AT
Soldering platform movement method	Manual movement
Way of starting	Foot switch
Soldering head size	MAX 60*5mm(Or customized)
Minimum soldering pitch	0.2mm
Power	AC220V±10% 50HZ,2300W
Soldering time	1~99.9s adjustable
Work pressure	0.45-0.70Mpa
Temperature setting	RT ~ 500 ± 5 DEG C.
Machine weight	35kg
Soldering pressure	1~20kg
Work size	Max 150*150mm
Work environment	10-60°C
Machine Size	440*440*530mm

## Configuration:

- 1.Pressing module: stepper motor + screw
- 2.Pressure display table : pointer
- 3.Magnetic cylinder sensor switch : SMC
- 4.Solenoid valve : made in Taiwan
- 5.Connectors and trachea : made in Taiwan
- 6.Filter regulator : made in Taiwan
- 7.Precision cylinder under pressure regulator : SMC
- 8.Control system: independent research and development ( Chinese )
- 9.Power transformer : 220V, 2000W
- 10.Driver module : 45A
- 11.Vacuum Generators : SMC
- 12.Button switch: Schneider
- 13.Relay: Omron
- 14.Chassis components: aluminum plus bending parts
- 15.Body color : gray

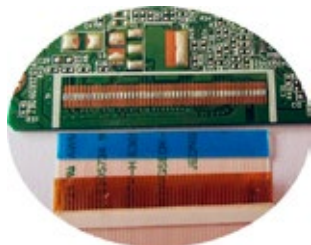
## Application:

---

Advantages: ultra-fine spacing welding can be achieved; Digital temperature display; Soldering speed 3-5s

Suitable for:

1. FPC-PCB soldering
2. FPC-FPC soldering
3. FPC- ceramic wafer soldering
4. FPC- ink cartridge plus chip soldering



## Configuration:

---

- Hot Bar Soldering Machine
- Start button\*1pcs
- Air pipe\*1pcs
- 1 year parts warranty

## Optional configuration:

---

- Customized precision fixture.
- Customized Soldering tip
- CCD +displayer 1set
- Start button
- Emergency Stop button
- Power switch button